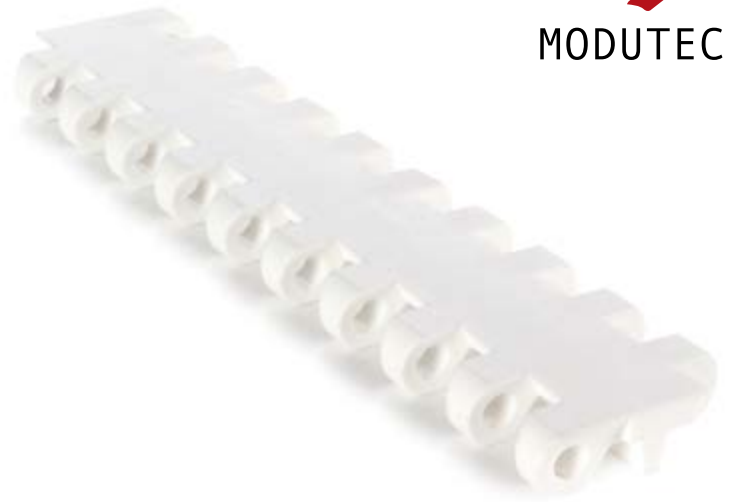


# EC254 C



MODUTECH



Pitch:	25.4 mm
Belt Surface:	Close, Smooth Surface
Minimum Width:	152.4 mm
Open Area (%):	%0
Flight:	Yes ( T25, T50, T75, TC75, T100 )
Sidewall:	Yes ( h=25 mm, h=50 mm, h=75 mm )
Rod:	Ø5 mm - Self Lock
Approved:	FDA and EU
Curve:	No
Color:	Additional colors available
Cleanability:	Excellent
Belt Thickness:	10 mm

## Product Features and Functional Benefits

- Easy to clean reduces downtime for cleaning time %70.
- Unique sprocket engagement - higher product load and longer conveyors.
- Close transfer applications.
- Reduces bacteria growth.

## Available Moulded Module Sizes

- 152.4 mm module
- 76.2 mm module
- 45 mm module
- 30 mm module

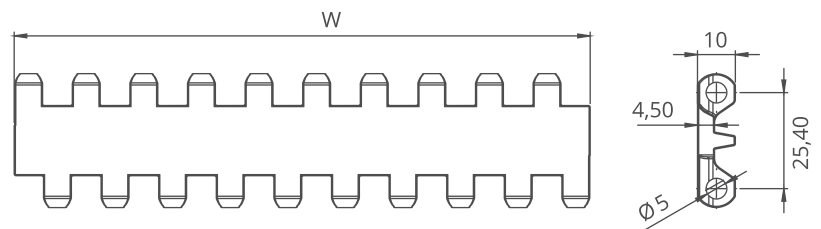
## EC254 C / Technical Information

BELT MATERIAL	BELT STRENGTH				TEMPERATURE		BELT WEIGHT
	Straight		Curve		C (min.)	C (max.)	Kg/m <sup>2</sup>
	Kg/m	N/m	Kg/m	N/m			
Polypropylene	1016	10160	-	-	+5	+90	4.50
Polyethylene	840	8400	-	-	-73	+66	5.00
Acetal	2515	25150	-	-	-43	+110	6.60

- Belt strength and temperature values are maximum on the table.

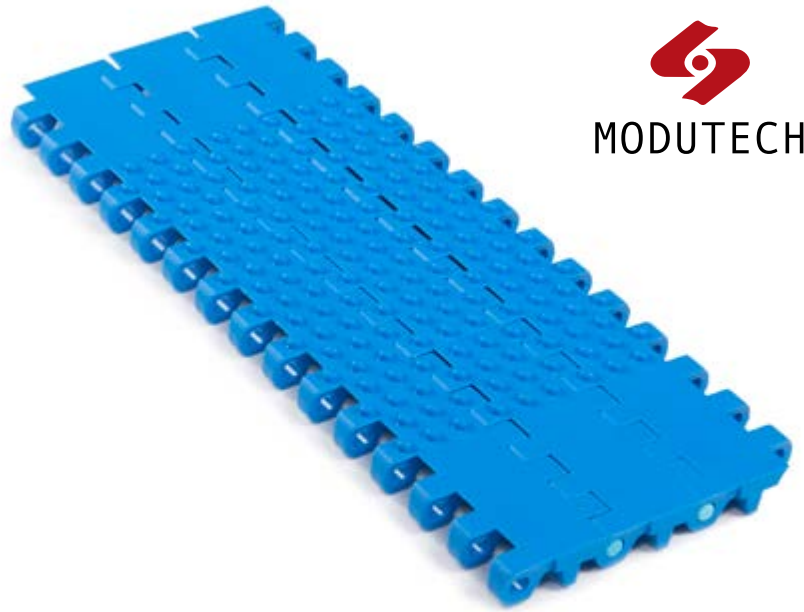
## EC254 C / Standard Belt Widths

BELT SERIES	WIDTH (W)				Belt With Tolerance (max.)
	PP-PE		POM		
	mm	inch	mm	inch	
EC254	152,4	6"	152,4	6"	± 0,5 mm
EC254	228,6	9"	228,6	9"	± 2 mm
EC254	304,8	12"	304,8	12"	± 2 mm
EC254	381	15"	381	15"	± 3 mm
EC254	457,2	18"	457,2	18"	± 3 mm
EC254	533,4	21"	533,4	21"	± 3 mm
EC254	609,6	24"	609,6	24"	± 3 mm
EC254	685,8	27"	685,8	27"	± 4 mm
EC254	762	30"	762	30"	± 4 mm
EC254	838,2	33"	838,2	33"	± 4 mm
EC254	914,4	36"	914,4	36"	± 4 mm
EC254	990,6	39"	990,6	39"	± 4 mm
EC254	1066,8	42"	1066,8	42"	± 4 mm
EC254	1143	45"	1143	45"	± 4 mm



- Standard belt increments 76.2 mm.
- Non standard belt increments 15 mm.
- Please contact with customer service for precise belt measurements.

# EC254 NT



Pitch:	25.4 mm
Belt Surface:	Closed, Nub Top Surface
Minimum Width:	152.4 mm
Open Area (%):	%0.
Flight:	Yes ( T25, T50, T75, TC75, T100 )
Sidewall:	Yes ( h=25 mm, h=50 mm, h=75 mm )
Rod:	Ø5 mm - Self Lock
Approved:	FDA and EU
Curve:	No
Color:	Additional colors available
Cleanability:	Excellent
Belt Thickness:	10 mm

## Product Features and Functional Benefits

- Easy to clean reduces downtime for cleaning time %70.
- Reduces bacteria growth.
- Non-adhesive due to reduced contact surface.
- Close transfer applications.

## Available Moulded Module Sizes

- 152.4 mm module

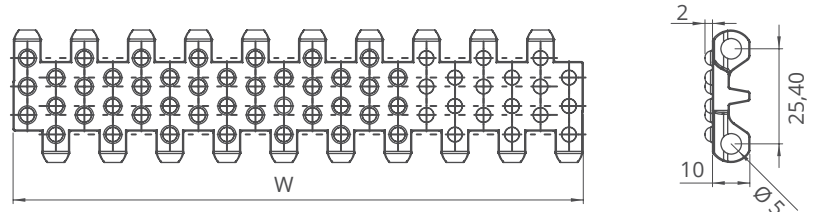
## EC254 NT / Technical Information

BELT MATERIAL	BELT STRENGTH				TEMPERATURE		BELT WEIGHT
	Straight		Curve		C (min.)	C (max.)	Kg/m <sup>2</sup>
	Kg/m	N/m	Kg/m	N/m			
Polypropylene	1016	10160	-	-	+5	+90	4.50
Polyethylene	840	8400	-	-	-73	+66	5.00
Acetal	2515	25150	-	-	-43	+110	6.60

- Belt strength and temperature values are maximum on the table.

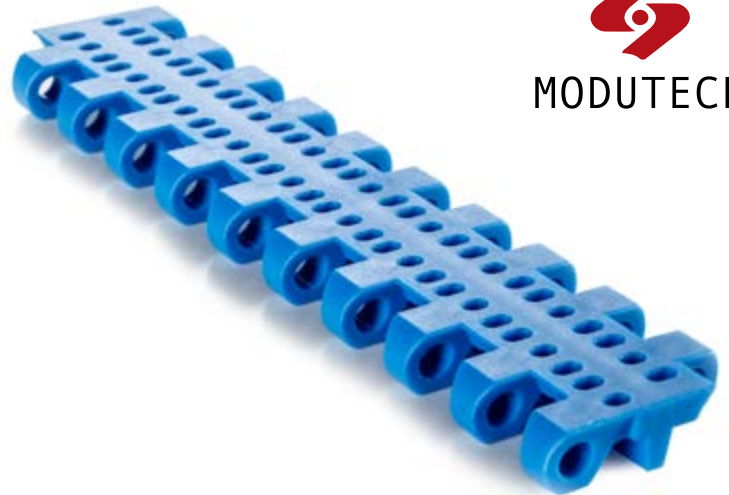
## EC254 NT / Standard Belt Widths

BELT SERIES	WIDTH (W)				Belt With Tolerance (max.)
	PP-PE		POM		
	mm	inch	mm	inch	
EC254	152,4	6"	152,4	6"	± 0,5 mm
EC254	228,6	9"	228,6	9"	± 2 mm
EC254	304,8	12"	304,8	12"	± 2 mm
EC254	381	15"	381	15"	± 3 mm
EC254	457,2	18"	457,2	18"	± 3 mm
EC254	533,4	21"	533,4	21"	± 3 mm
EC254	609,6	24"	609,6	24"	± 3 mm
EC254	685,8	27"	685,8	27"	± 4 mm
EC254	762	30"	762	30"	± 4 mm
EC254	838,2	33"	838,2	33"	± 4 mm
EC254	914,4	36"	914,4	36"	± 4 mm
EC254	990,6	39"	990,6	39"	± 4 mm
EC254	1066,8	42"	1066,8	42"	± 4 mm
EC254	1143	45"	1143	45"	± 4 mm



- Standard belt increments 76.2 mm.
- Non standard belt increments 15 mm.
- Please contact with customer service for precise belt measurements.

# EC254 PR%16



Pitch:	25.4 mm
Belt Surface:	Open, Smooth Surface
Minimum Width:	152.4 mm
Open Area (%):	%16. ( Biggest opening 2.5x3.7 mm )
Flight:	Yes ( T25, T50, T75, TC75, T100 )
Sidewall:	Yes ( h=25 mm, h=50 mm, h=75 mm )
Rod:	Ø5 mm - Self Lock
Approved:	FDA and EU
Curve:	No
Color:	Additional colors available
Cleanability:	Excellent
Belt Thickness:	10 mm

## Product Features and Functional Benefits

- Unique sprocket engagement - precise indexing, easy cleaning.
- Different openings to optimize performance in cooling and draining applications.
- Easy to clean reduces downtime for cleaning time %70.
- Reduces bacteria growth.

## Available Moulded Module Sizes

- 152.4 mm module
- 76.2 mm module
- 45 mm module
- 30 mm module

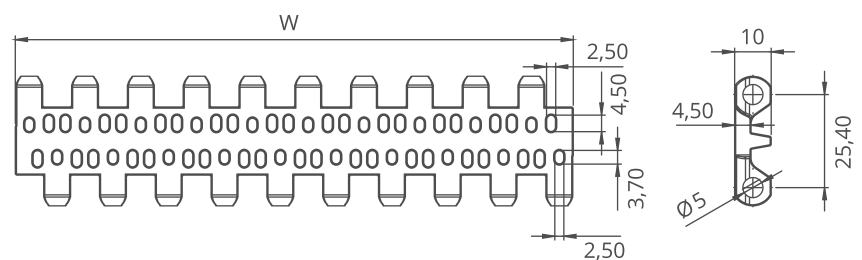
## EC254 PR%16 / Technical Information

BELT MATERIAL	BELT STRENGTH				TEMPERATURE		BELT WEIGHT
	Straight		Curve		C (min.)	C (max.)	Kg/m <sup>2</sup>
	Kg/m	N/m	Kg/m	N/m			
Polypropylene	1016	10160	-	-	+5	+90	3.80
Polyethylene	840	8400	-	-	-73	+66	4.20
Acetal	2515	25150	-	-	-43	+110	5.70

- Belt strength and temperature values are maximum on the table.

## EC254 PR%16 / Standard Belt Widths

BELT SERIES	WIDTH (W)				Belt With Tolerance (max.)
	PP-PE		POM		
	mm	inch	mm	inch	
EC254	152,4	6"	152,4	6"	± 0,5 mm
EC254	228,6	9"	228,6	9"	± 2 mm
EC254	304,8	12"	304,8	12"	± 2 mm
EC254	381	15"	381	15"	± 3 mm
EC254	457,2	18"	457,2	18"	± 3 mm
EC254	533,4	21"	533,4	21"	± 3 mm
EC254	609,6	24"	609,6	24"	± 3 mm
EC254	685,8	27"	685,8	27"	± 4 mm
EC254	762	30"	762	30"	± 4 mm
EC254	838,2	33"	838,2	33"	± 4 mm
EC254	914,4	36"	914,4	36"	± 4 mm
EC254	990,6	39"	990,6	39"	± 4 mm
EC254	1066,8	42"	1066,8	42"	± 4 mm
EC254	1143	45"	1143	45"	± 4 mm



- Standard belt increments 76.2 mm.
- Non standard belt increments 15 mm.
- Please contact with customer service for precise belt measurements.