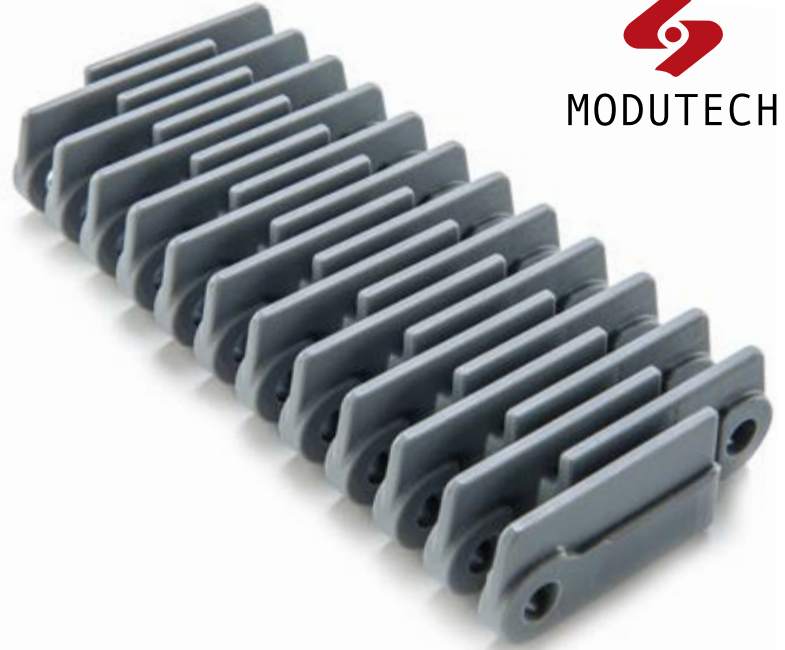


HP508 RR



Pitch:	50.8 mm
Belt Surface:	Open, Raised Rib Surface
Minimum Width:	152.4 mm
Open Area (%):	%36. (Biggest opening 3.5x18.5 mm)
Flight:	No
Sidewall:	No
Rod:	Ø7 mm
Approved:	FDA and EU
Curve:	No
Color:	Additional colors available
Cleanability:	Good
Belt Thickness:	24 mm
Comb:	Yes

Product Features and Functional Benefits

- Less friction and product contact for easy cooking, cooling and freezing of products.
- Reduces back line pressure with up to %70.
- Reduced dirt and oxide build up due to self cleaning surface.
- Finger plate for trouble free transfer.
- Unique sprocket engagement reduces pulsation and increases load capacity.

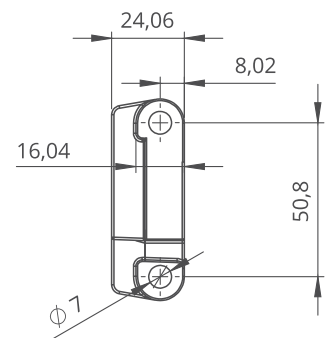
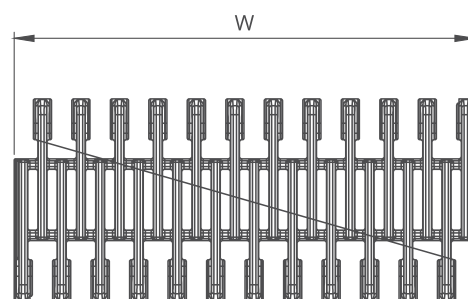
HP508 RR / Technical Information

BELT MATERIAL	BELT STRENGTH				TEMPERATURE		BELT WEIGHT
	Straight		Curve		C (min.)	C (max.)	
	Kg/m	N/m	Kg/m	N/m			Kg/m ²
Polypropylene	3420	34200	-	-	+5	+90	8.90
Polyethylene	-	-	-	-	-	-	-
Acetal	4550	45500	-	-	-43	+110	13.50

- Belt strength and temperature values are maximum on the table.

HP508 RR / Standard Belt Widths

BELT SERIES	WIDTH (W)				Belt With Tolerance (max.)
	PP-PE		POM		
	mm	inch	mm	inch	
HP508	152,4	6"	152,4	6"	± 0,5 mm
HP508	228,6	9"	228,6	9"	± 2 mm
HP508	304,8	12"	304,8	12"	± 2 mm
HP508	381	15"	381	15"	± 2 mm
HP508	457,2	18"	457,2	18"	± 3 mm
HP508	533,4	21"	533,4	21"	± 3 mm
HP508	609,6	24"	609,6	24"	± 3 mm
HP508	685,8	27"	685,8	27"	± 3 mm
HP508	762	30"	762	30"	± 4 mm
HP508	838,2	33"	838,2	33"	± 4 mm
HP508	914,4	36"	914,4	36"	± 4 mm
HP508	990,6	39"	990,6	39"	± 5 mm
HP508	1066,8	42"	1066,8	42"	± 5 mm
HP508	1143	45"	1143	45"	± 5 mm



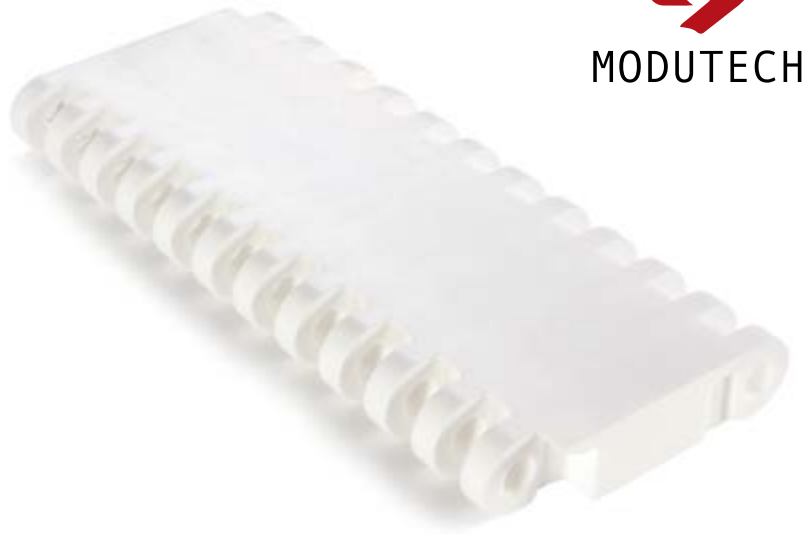
- Standard belt increments 76.2 mm.

- Please contact with customer service for precise belt measurements.

HP508 C



Pitch:	50.8 mm
Belt Surface:	Close, Smooth Surface
Minimum Width:	152.4 mm
Open Area (%):	%0
Flight:	No
Sidewall:	No
Rod:	Ø7 mm
Approved:	FDA and EU
Curve:	No
Color:	Additional colors available
Cleanability:	Good
Belt Thickness:	16 mm



Product Features and Functional Benefits

- Unique sprocket engagement reduces pulsation and increases load capacity.
- High power, bi-directional belt for long conveyors.
- Unique sprocket engagement - higher product load and longer conveyors.
- Strong and thick product supports allow more load without breaking.
- Impact resistance to withstand heavy objects falling into the belt.
- Close transfer applications.

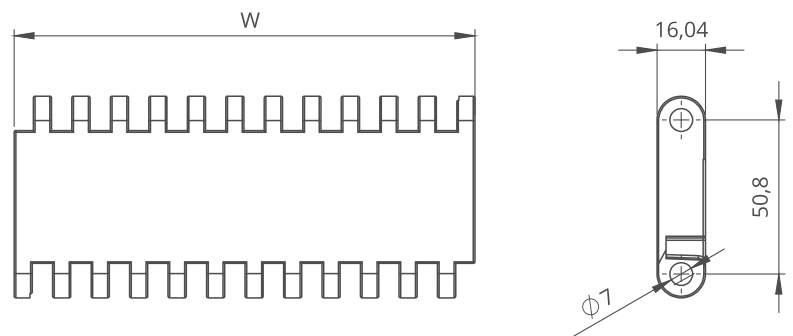
HP508 C / Technical Information

BELT MATERIAL	BELT STRENGTH				TEMPERATURE		BELT WEIGHT
	Straight		Curve		C (min.)	C (max.)	
	Kg/m	N/m	Kg/m	N/m			Kg/m ²
Polypropylene	3420	34200	-	-	+5	+90	7.80
Polyethylene	-	-	-	-	-73	+66	8.60
Acetal	4550	45500	-	-	-43	+110	12.20

- Belt strength and temperature values are maximum on the table.

HP508 C / Standard Belt Widths

BELT SERIES	WIDTH (W)				Belt With Tolerance (max.)
	PP-PE		POM		
	mm	inch	mm	inch	
HP508	152,4	6"	152,4	6"	± 0,5 mm
HP508	228,6	9"	228,6	9"	± 2 mm
HP508	304,8	12"	304,8	12"	± 2 mm
HP508	381	15"	381	15"	± 2 mm
HP508	457,2	18"	457,2	18"	± 3 mm
HP508	533,4	21"	533,4	21"	± 3 mm
HP508	609,6	24"	609,6	24"	± 3 mm
HP508	685,8	27"	685,8	27"	± 3 mm
HP508	762	30"	762	30"	± 4 mm
HP508	838,2	33"	838,2	33"	± 4 mm
HP508	914,4	36"	914,4	36"	± 4 mm
HP508	990,6	39"	990,6	39"	± 5 mm
HP508	1066,8	42"	1066,8	42"	± 5 mm
HP508	1143	45"	1143	45"	± 5 mm



- Standard belt increments 76.2 mm.

- Please contact with customer service for precise belt measurements.